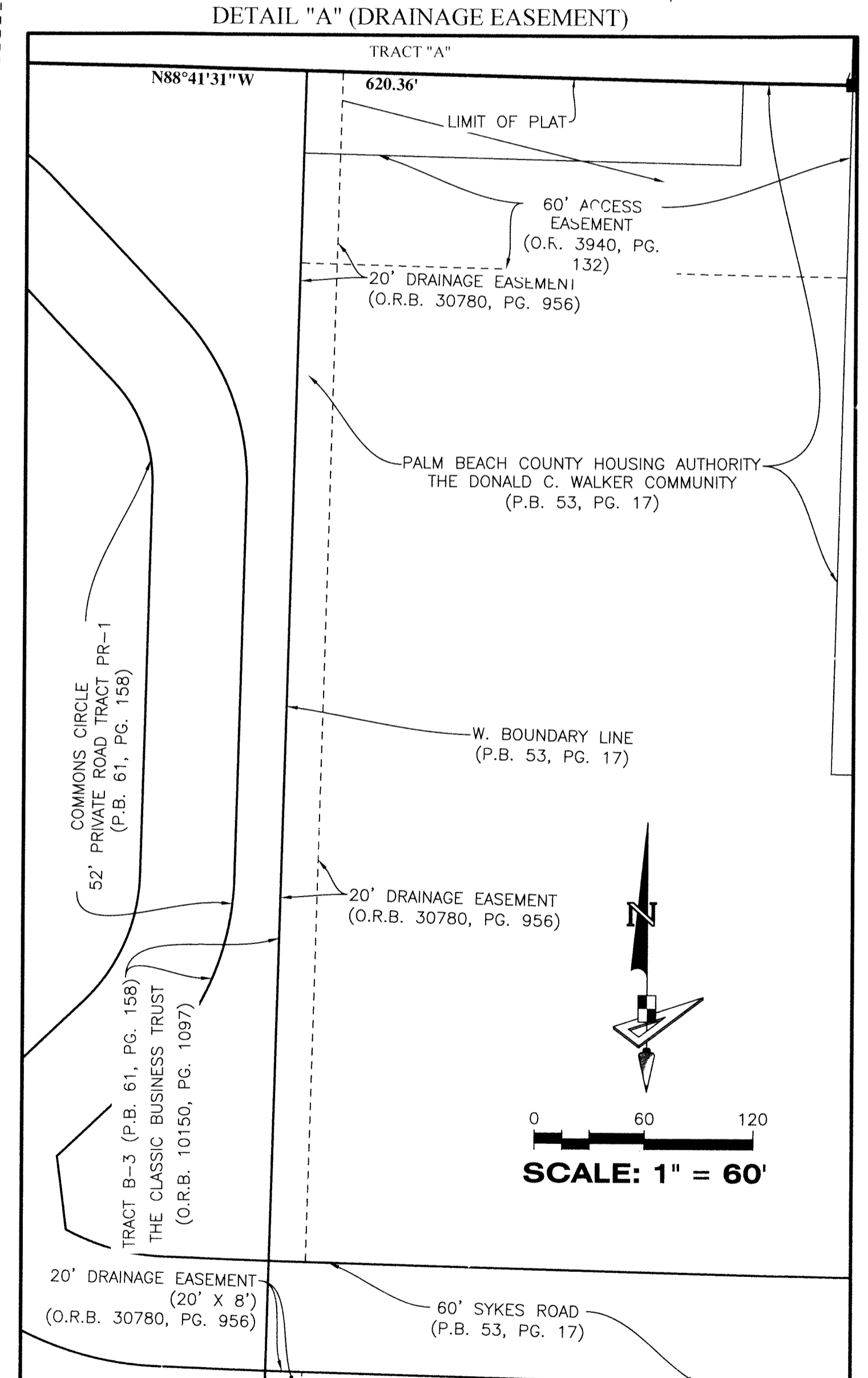
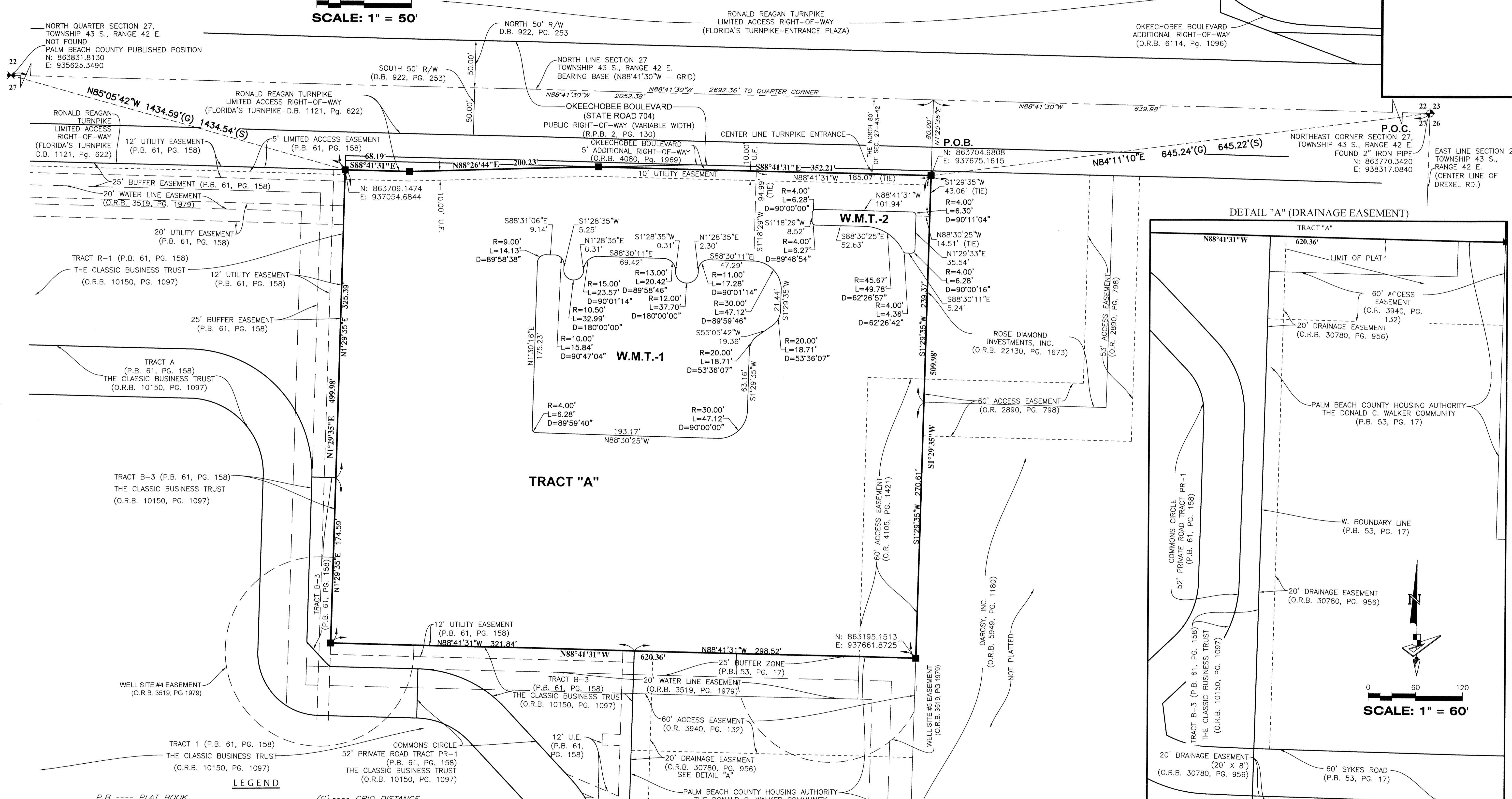
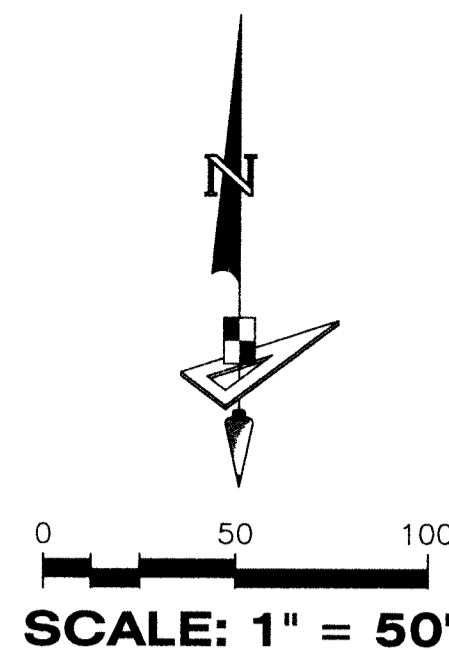


SYKES COMMERCIAL M.U.P.D.

BEING A SUBDIVISION OF A PORTION OF SECTION 27,
TOWNSHIP 43 SOUTH, RANGE 42 EAST, PALM BEACH
COUNTY, FLORIDA, ALL LYING IN SECTION 27, TOWNSHIP 43
SOUTH, RANGE 42 EAST, PALM BEACH COUNTY, FLORIDA.

63



- LEGEND**
- | | |
|---|--|
| P.B. ---- PLAT BOOK | (G) ---- GRID DISTANCE |
| PG. ---- PAGE | (S) ---- GROUND DISTANCE |
| R.P.B. ---- ROAD PLAT BOOK | R/W ---- RIGHT-OF-WAY |
| O.R./O.R.B. ---- OFFICIAL RECORDS BOOK | ℄ ---- CENTER LINE OF ROAD |
| D.B. ---- DEED BOOK | R ---- RADIUS |
| P.O.B. ---- POINT OF BEGINNING | L ---- ARCH LENGTH |
| P.O.C. ---- POINT OF COMMENCEMENT | Δ ---- DELTA ANGLE |
| D.E. ---- DRAINAGE EASEMENT | ◆ ---- SECTION CORNER LOCATION |
| U.E. ---- UTILITY EASEMENT | ⊠ ---- QUARTER SECTION LOCATION |
| P.B.C. ---- PALM BEACH COUNTY | W.M.T. ---- WATER MANAGEMENT TRACT |
| M.U.P.D. ---- MULTI-USE PLANNED DEVELOPMENT | ■/PRM ---- SET PERMANENT REFERENCE MONUMENT,
A 1 1/2" BRASS DISK STAMPED "PRM
LB7768" IN A 4"x4" CONCRETE MONUMENT |
| 1-43-40 ---- SECTION 6, TOWNSHIP 43 SOUTH,
RANGE 41 EAST | |

- STATE PLANE COORDINATE NOTES:**
- ALL DISTANCES ARE GROUND UNLESS OTHERWISE NOTED
 - SCALE FACTOR = 1.0000314
 - COORDINATE SYSTEM = 1983 STATE PLANE TRANSVERSE MERCATOR PROJECTION COORDINATES SHOWN ARE GRID COORDINATES
 - ZONE = FLORIDA EAST ZONE
 - DATUM = NAD 83-1990 ADJUSTMENT
 - GROUND DISTANCE X SCALE FACTOR = GRID DISTANCE
 - LINEAR UNIT = U.S. SURVEY FEET
 - PLAT BEARINGS = GRID BEARINGS
 - NO ROTATION

THIS INSTRUMENT PREPARED BY
LUIS J. ORTIZ, P.S.M.
LS7006 STATE OF FLORIDA
GEOPoint SURVEYING, INC.
4152 WEST BLUE HERON BOULEVARD, SUITE 105,
RIVIERA BEACH, FLORIDA 33404.
CERTIFICATE OF AUTHORIZATION NO. LB7768

GeoPoint
Surveying, Inc.

4152 W. Blue Heron Blvd.
Suite 105
Riviera Beach, FL 33404

Phone: (561) 444-2720
www.geopointsurvey.com
Licensed Business Number LB 7768

Sheet No. 2 of 2 Sheets